

## Installation Instructions

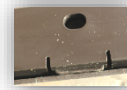


Hold frame assembly as shown. Separate finished frame face from back mounting plate by pulling bottom of frame gently down and out to unlatch it from bottom snap-fit.

Note that two hook-in tabs retain the frame face at the top, and two snap-fit tabs retain it at the bottom.



Top hook-in tab detail



Bottom snap-fit tab detail



Mount back plate with two stainless steel screws provided, with the molded in word "TOP" on the back plate facing up.



Align the hook-in tabs on back of the frame with slots at the top of the back plate, and gently pull down to engage them. Use screw heads for proper placement reference.

Then simply snap in the bottom by pushing on the frame below the two lower screw cover features .



To remove the frame for cleaning or to update tabs, gently pull down and out to disconnect the lower snap-fit tabs as shown. Then slightly lift the frame to disengage top hook-in tabs.

### Additional Finish-Line frame options



### Altec Products

10317 Liberty Lane  
Chisago City, MN 55013  
651-466-0212

Visit [AltecProducts.com](http://AltecProducts.com) for distinctive accessories